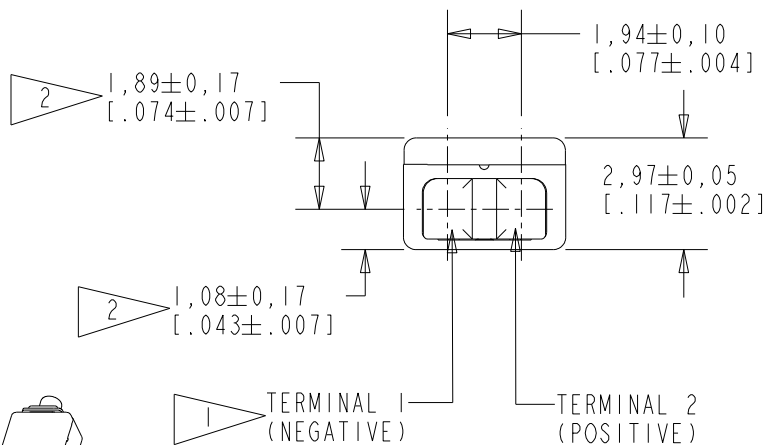
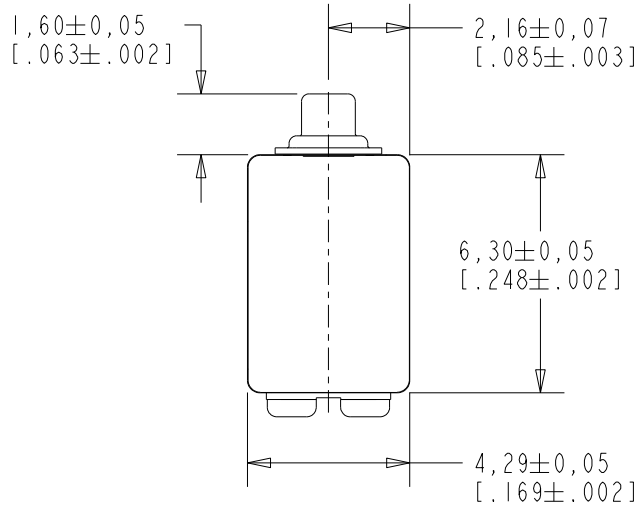


ED-27851-M05

SHT 1.1



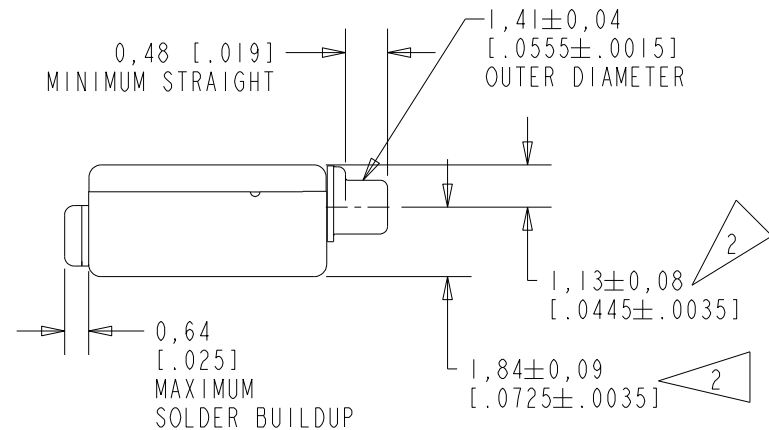
SCALE 2:1

NOMINAL WEIGHT
.31 GRAM

DIMENSIONS IN MILLIMETERS [INCHES]

NOTE:

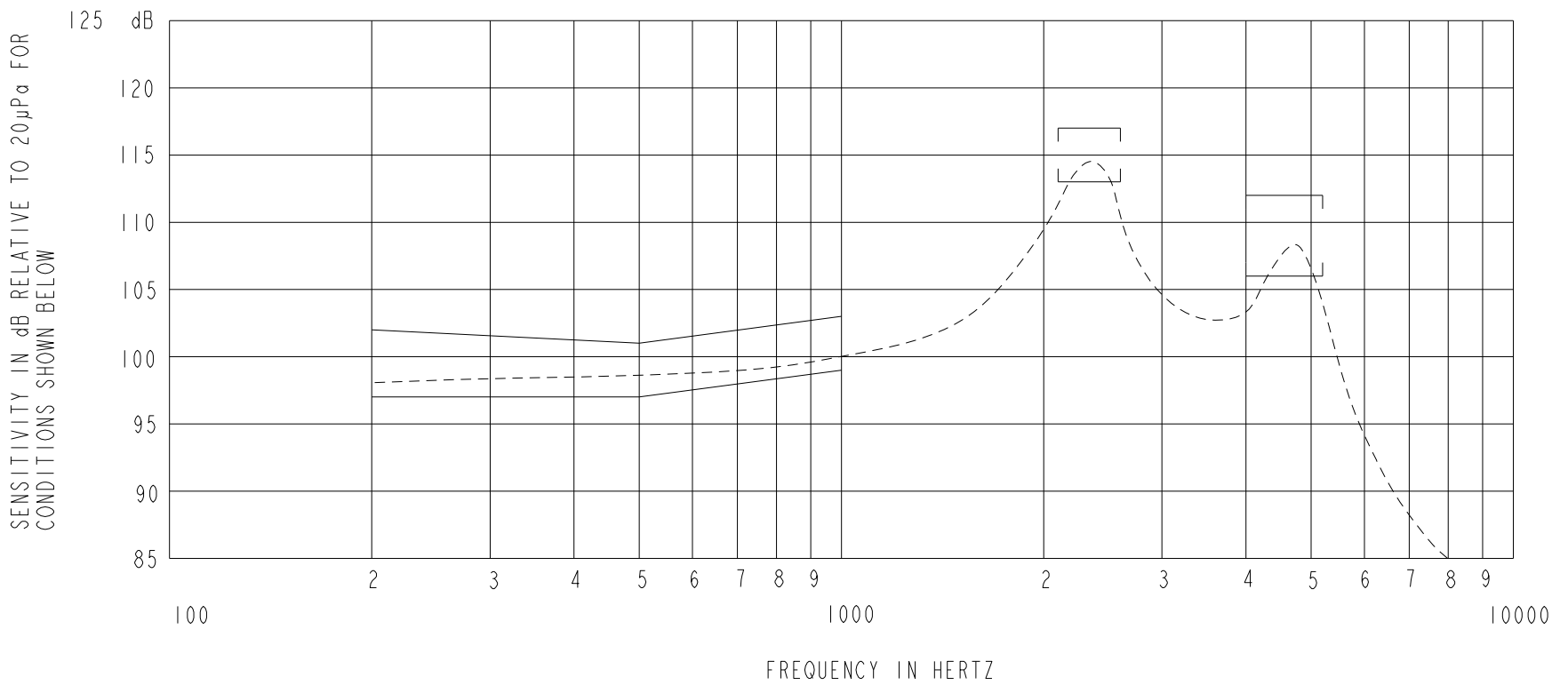
- 1 A POSITIVE GOING VOLTAGE AT TERMINAL 2, RELATIVE TO TERMINAL 1, CAUSES A DECREASE IN PRESSURE AT THE SOUND OUTLET.
- 2 LOCATED FROM TWO SURFACES FOR CUSTOMER CONVENIENCE. ONLY APPLICABLE FROM ONE SURFACE, NOT TO BE USED TOGETHER. HORIZONTAL LOCATION FOR TERMINAL CENTERED TO $\pm 0,17$ [.007].



Revision	C.O. #	Implementation Date	RELEASE LEVEL	REVISION
			Active	D
D	PI0000425	3-9-16		

SCALE: 5:1		DR. BY	DATE
DO NOT SCALE DRAWING		MMM	9-12-05
TITLE: RECEIVER		CK. BY	DATE
OUTLINE DRAWING		GJP	9-13-05
ED-27851-M05		APP. BY	DATE
SHT 1.1		GJP	9-13-05

KNOWLES CORPORATION



NOTES:

1. MEASUREMENTS MADE USING 10m (.394") X 1mm (.039") ID TUBE CONNECTED TO A SIMULATED ANSI S3.7-1973 TYPE HA-3 COUPLER. (IEC 60318-5).

2. SENSITIVITY

FREQUENCY	MIN.	MAX.
200	97.0	102.0
500	97.0	101.0
1000	99.0	103.0
2100-2600	113.0	117.0
4000-5200	106.0	112.0

- RESPONSE, IMPEDANCE, AND DISTORTION MEASUREMENTS MADE USING THE ELECTRICAL TEST CONDITIONS SHOWN BELOW.
- ELECTRICAL SOURCE IMPEDANCE MUST BE GREATER THAN 20 TIMES 1KHz IMPEDANCE FOR TEST CONDITIONS SHOWN BELOW.
- INDIVIDUAL SPECIFICATIONS.

PORT LOCATION	IMPEDANCE OHMS ±15%		DCR @20°C OHMS ±10%	DISTORTION		ELECTRICAL TEST CONDITIONS	
	1KHz	500Hz		MAX. %	FREQ Hz	AC mA RMS	DC mA
12C	1220	656	376	4	800	0.5	0.7

6. SUFFIX DESCRIPTIONS:

- CUT COIL WIRE LEADS AFTER TERMINALS ARE SOLDERED.
- OMIT CIRCLE K FROM LASER MARKING ON ED-27851.
- RESPONSE GUARDBAND (TIGHTEN 1.0 dB @ EACH LIMIT) AT 0.5 kHz.
- 1% DISTORTION GUARDBAND IN FT DIST AT THIRD HARMONIC AND NOMINAL DRIVE LEVELS.
- 100% VISUAL INSPECTION BEFORE SHIPPING.

Revision	C.O. #	Implementation Date	RELEASE LEVEL	REVISION
D	PI0000425	3-9-16	Active	D

KNOWLES CORPORATION

WHEN TEST LIMITS ARE USED TO ESTABLISH INCOMING INSPECTION ACCEPTANCE/REJECTION CRITERIA, CORRELATION OF TEST EQUIPMENT WITH KNOWLES IS ALSO REQUIRED FOR ELIMINATION OF EQUIPMENT AND TEST METHOD VARIATION

TITLE: RECEIVER
PERFORMANCE SPECIFICATION

ED-27851-M05
SHT 2.1

DR. BY	DATE
GJP	192-1222-0055
CK. BY	DATE
GJP	192-1239-0055
APP. BY	DATE
GJP	192-1239-0055